

AUCKLAND TO MELBOURNE

VOYAGE NUMBER #SN250121016



CRUISE STARTS
JAN 21, 2025

CRUISE ENDS
FEB 6, 2025

DURATION
16 DAYS

SHIP
SILVER NOVA

FEATURED OFFERS



SUITE UPGRADES: ENHANCE YOUR EXPERIENCE

FROM
A\$15,600 PER GUEST
WITH LOWEST FARE AVAILABLE

THE LUXURY OF CHOICE

Catering to individual travel preferences, we are pleased to offer our guests the luxury of choice when selecting the perfect fare.

Prices valid until May 31, 2024 but may increase on June 1, 2024 and are subject to availability.

% SUITE UPGRADES - ENHANCE YOUR EXPERIENCE

DOOR-TO-DOOR

PEACE OF MIND - ALL INCLUSIVE

For a relaxing, seamless journey from the moment you depart home, this fare includes airfare, transfers, and shore excursions.

Payment 100%* refundable until 150 days pre cruise

FROM A\$18,100

PER GUEST

PRE CRUISE BENEFITS

- Private Executive Transfers
- International flights - Business class
- Airport transfers

ALL ONBOARD LUXURY INCLUSIONS

- Food and beverages
- Butler service

SHORE EXCURSIONS

- Shore excursions

POST CRUISE BENEFITS

- Airport transfers
- International flights - Business class
- Private Executive Transfers

% SUITE UPGRADES - ENHANCE YOUR EXPERIENCE

PORT-TO-PORT

FLEXIBILITY - ALL INCLUSIVE

For those who prefer to manage their own airfare and transfers, but still want included shore excursions, this fare is for you

Payment 100%* refundable until 150 days pre cruise

FROM A\$15,600

PER GUEST

PRE CRUISE BENEFITS

- Private Executive Transfers
- International Flights
- Airport transfers

ALL ONBOARD LUXURY INCLUSIONS

- Food and beverages
- Butler service

SHORE EXCURSIONS

- Shore excursions

POST CRUISE BENEFITS

- Airport transfers
- International Flights
- Private Executive Transfers

OFFERS FOR THIS CRUISE

All offers are subject to availability.



SUITE UPGRADES

 Expires on May 31, 2024

Enjoy suite upgrade(s) in selected categories, a \$1,000 Shipboard Credit per suite and a refundable 15% reduced deposit when you book by May 31, 2024.



SAIL WITH US REFERRAL OFFER

Venetian Society members may refer up to 10 new-to-Silversea guests in a calendar year for referral savings of A\$650 per suite referred – A\$2,600 of which can be applied per booking. Take advantage of this enhanced opportunity today. Terms and conditions apply.



SPECIAL SINGLE FARES

Solo travellers enjoy single supplements at only 25%.



VENETIAN SOCIETY SAILINGS

Members of the Venetian Society enjoy an additional 5% saving on the cruise fare.

Itinerary & Excursions

 9 PORTS

 2 COUNTRIES

Overflowing with natural splendour, the vast lands of Australia and New Zealand beg discovery. But a big place needs lots of time! This cruise sails from Auckland to Melbourne, exploring the best of the lands down under, while keeping the pace leisurely. On your way you'll enjoy overnights in Auckland, Napier, Tasmania and Melbourne, relax during open sea days and stop off in tranquil places that are blessed with good looks, superb wildlife and lots of adventurous spirit.



Included with **Door-to-Door**



Private Executive Transfers

Included with **Door-to-Door**



International flights - Business class

Included with **Door-to-Door**



Airport transfers



01 Auckland

NEW ZEALAND



TUE, JANUARY 21



02 Auckland

**NEW ZEALAND
12 EXCURSIONS**

**WED, JANUARY 22
DEPARTURE 18:00**



03 Tauranga

**NEW ZEALAND
12 EXCURSIONS**

**THU, JANUARY 23
08:00 - 18:00**



04 Gisborne

**NEW ZEALAND
6 EXCURSIONS**

**FRI, JANUARY 24
09:00 - 19:00**



05 Napier

**NEW ZEALAND
7 EXCURSIONS**



**SAT, JANUARY 25
ARRIVAL 08:00**



06 Napier

**NEW ZEALAND
7 EXCURSIONS**

**SUN, JANUARY 26
DEPARTURE 18:00**



07 Wellington

NEW ZEALAND
10 EXCURSIONS

MON, JANUARY 27
09:00 - 18:00



08 New Plymouth

NEW ZEALAND
4 EXCURSIONS

TUE, JANUARY 28
08:00 - 19:00



09 Picton

NEW ZEALAND
10 EXCURSIONS

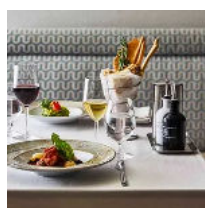
WED, JANUARY 29
08:00 - 19:00



10 Day at sea

INTERNATIONAL WATERS

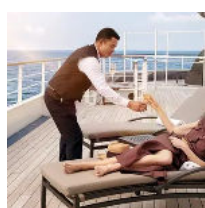
THU, JANUARY 30



11 Day at sea

INTERNATIONAL WATERS

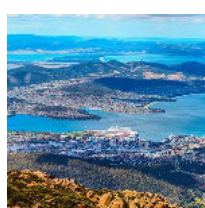
FRI, JANUARY 31



12 Day at sea

INTERNATIONAL WATERS

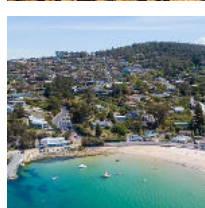
SAT, FEBRUARY 1



13 Hobart, Tasmania

AUSTRALIA
14 EXCURSIONS

 **SUN, FEBRUARY 2**
ARRIVAL 08:00



14 Hobart, Tasmania

AUSTRALIA
13 EXCURSIONS

MON, FEBRUARY 3
DEPARTURE 18:00



15 Day at sea

INTERNATIONAL WATERS

TUE, FEBRUARY 4



16 Melbourne

AUSTRALIA
12 EXCURSIONS



WED, FEBRUARY 5
ARRIVAL 08:00



17 Melbourne

AUSTRALIA

THU, FEBRUARY 6

Included with **Door-to-Door**



Airport transfers

Included with **Door-to-Door**



International flights - Business class

Included with **Door-to-Door**



Private Executive Transfers

The excursions are provided as a sample of what may be offered on this voyage and are subject to change. We are constantly updating our shore excursion programme with immersive and authentic experiences, so please do not hesitate to review your tour programme choice closer to your sail date. We invite guests to visit [my.silversea.com](https://www.silversea.com) for the most updated information.

SUITES

Silversea's oceanview suites are some of the most spacious in luxury cruising. All include the services of a butler thanks to the highest service ratio at sea and almost all have a private teak veranda so that you can breathe in the fresh sea air by merely stepping outside your door. Select your suite and Request a Quote - guests who book early are rewarded with the best fares and ability to select their desired suite.



OTIUM SUITE

CATEGORY HIGHLIGHTS

- Deck 6, 7 of 9
- Suite size 123 sq.m. including veranda
- Veranda
- Living room

PRICES PER GUESTS START FROM

DOOR-TO-DOOR **WAIT LIST**

PORT-TO-PORT **WAITLIST**



OWNER'S SUITE

CATEGORY HIGHLIGHTS

- Deck 8 of 9
- Suite size 98 sq.m. including veranda
- Veranda
- Living room

PRICES PER GUESTS START FROM

DOOR-TO-DOOR **WAIT LIST**

PORT-TO-PORT **WAITLIST**



GRAND SUITE

CATEGORY HIGHLIGHTS

- Deck 7 of 9
- Suite size 85 sq.m. including veranda
- Veranda
- Living room

PRICES PER GUESTS START FROM

DOOR-TO-DOOR **A\$51,300**

PORT-TO-PORT **A\$48,800**



MASTER SUITE

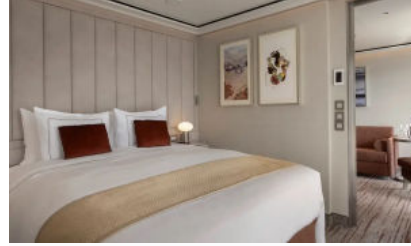
CATEGORY HIGHLIGHTS

- Deck 6, 7, 8, 9 of 9
- Suite size 67-77 sq.m. including veranda
- Veranda
- Living room

PRICES PER GUESTS START FROM

DOOR-TO-DOOR **A\$50,300**

PORT-TO-PORT **A\$47,800**



SIGNATURE SUITE

CATEGORY HIGHLIGHTS

- Deck 6, 7, 8, 9 of 9
- Suite size 65 sq.m. including veranda
- Veranda
- Living room

PRICES PER GUESTS START FROM

DOOR-TO-DOOR **A\$48,200**

PORT-TO-PORT **A\$45,700**



SILVER SUITE

CATEGORY HIGHLIGHTS

- Deck 6, 7, 8 of 9
- Suite size 63 sq.m. including veranda
- Veranda
- Living room

PRICES PER GUESTS START FROM

DOOR-TO-DOOR **A\$38,000**

PORT-TO-PORT **A\$35,500**



JUNIOR GRAND SUITE

CATEGORY HIGHLIGHTS

- Deck 6, 9 of 9
- Suite size 54-58 sq.m. including veranda
- Veranda
- Living room

PRICES PER GUESTS START FROM

DOOR-TO-DOOR **A\$35,900**

PORT-TO-PORT **A\$33,400**



PREMIUM MEDALLION SUITE

CATEGORY HIGHLIGHTS

- Deck 6, 7, 8, 9 of 9
- Suite size 49 sq.m. including veranda
- Veranda
- Living room

PRICES PER GUESTS START FROM

DOOR-TO-DOOR **A\$33,900**

PORT-TO-PORT **A\$31,400**



MEDALLION SUITE

CATEGORY HIGHLIGHTS

- Deck 6, 7, 8, 9 of 9
- Suite size 49 sq.m. including veranda
- Veranda
- Living room

PRICES PER GUESTS START FROM

DOOR-TO-DOOR **A\$30,700**

PORT-TO-PORT **A\$28,200**



PREMIUM VERANDA SUITE

SUITE UPGRADES: ENHANCE YOUR EXPERIENCE

CATEGORY HIGHLIGHTS

- Deck 6, 7, 8, 9 of 9
- Suite size 33 sq.m. including veranda
- Veranda

PRICES PER GUESTS START FROM

DOOR-TO-DOOR ~~A\$23,400~~ **A\$19,200**

PORT-TO-PORT ~~A\$19,000~~ **A\$16,700**



DELUXE VERANDA SUITE

SUITE UPGRADES: ENHANCE YOUR EXPERIENCE

CATEGORY HIGHLIGHTS

- Deck 6, 7, 8, 9 of 9
- Suite size 33 m² including veranda
- Veranda

PRICES PER GUESTS START FROM

DOOR-TO-DOOR ~~A\$20,200~~ **A\$18,100**

PORT-TO-PORT ~~A\$17,800~~ **A\$15,600**



SUPERIOR VERANDA SUITE

SUITE UPGRADES: ENHANCE YOUR EXPERIENCE

CATEGORY HIGHLIGHTS

- Deck 6, 7, 8, 9 of 9
- Suite size 33 sq.m. including veranda
- Veranda

PRICES PER GUESTS START FROM

DOOR-TO-DOOR ~~A\$19,200~~ **A\$18,100**

PORT-TO-PORT ~~A\$16,700~~ **A\$15,600**



CLASSIC VERANDA SUITE

CATEGORY HIGHLIGHTS

- Deck 6, 7, 8, 9 of 9
- Suite size 33 sq.m. including veranda
- Veranda

PRICES PER GUESTS START FROM

DOOR-TO-DOOR **A\$18,100**

PORT-TO-PORT **A\$15,600**

All inclusive onboard benefits

Enjoy the 24-hour gourmet dining, butler service, superb entertainment and premium beverages that Silversea is known for.

STAFF & SERVICES

- Butler services in every suite

View more about this cruise:

<https://www.silversea.com/destinations/australia-new-zealand-cruise/auckland-to-melbourne-sn250121016.html>

To view all terms and conditions please visit: <https://www.silversea.com/terms-and-conditions>

- Nearly one crew member for every guest
- 24-hour dining service
- Complimentary transportation into town in most ports



LEISURE ONBOARD

- Multiple restaurants, diverse cuisine, open-seating dining
- Beverages in-suite and throughout the ship, including champagne, select wines and spirits
- Onboard entertainment
- Spa and Fitness Center



UTILITIES & AMENITIES

- Unlimited free WiFi
- Onboard gratuities

Ship - Silver Nova

Introducing Silver Nova - our newest vessel that joined us in summer 2023, and is a home away from home for up to 728 guests. Silver Nova's innovative asymmetrical design introduces the world like never before, offering an immersive destination experience to our guests. With a gross tonnage of 54,700 tons, she offers a space-to-guest ratio of 75 GRT-per-passenger becoming one of the most spacious cruise ships ever built. What's more, Silver Nova is our most environmentally friendly, and thanks to her groundbreaking technological solutions, she propels Silversea into a new era of sustainable cruising. It's the Nova way to travel.

Ship Details: <https://www.silversea.com/ships/silver-nova.html>

