

DUBLIN TO COPENHAGEN

EXPEDITION CRUISE

VOYAGE NUMBER #WI250716009



CRUISE STARTS
JUL 16, 2025

CRUISE ENDS
JUL 25, 2025

DURATION
9 DAYS

SHIP
SILVER WIND

FEATURED OFFERS

% SUITE UPGRADES: ENHANCE YOUR EXPERIENCE

FROM
A\$10,800 PER GUEST
WITH LOWEST FARE AVAILABLE

THE LUXURY OF CHOICE

Catering to individual travel preferences, we are pleased to offer our guests the luxury of choice when selecting the perfect fare.

Prices valid until May 31, 2024 but may increase on June 1, 2024 and are subject to availability.

% SUITE UPGRADES - ENHANCE YOUR EXPERIENCE

DOOR-TO-DOOR

PEACE OF MIND - ALL INCLUSIVE

For a relaxing, seamless journey from the moment you depart home, this fare includes airfare, transfers, and shore excursions.

Payment 100%* refundable until 150 days pre cruise

FROM A\$15,800

PER GUEST

PRE CRUISE BENEFITS

- Private Executive Transfers
- International flights - Economy class or Business Class upgrade at reduced rates
- Airport transfers

ALL ONBOARD LUXURY INCLUSIONS

- Food and beverages
- Butler service
- Expedition gear

SHORE EXCURSIONS

- Shore excursions

POST CRUISE BENEFITS

- Airport transfers
- International flights - Economy class or Business Class upgrade at reduced rates
- Private Executive Transfers

% SUITE UPGRADES - ENHANCE YOUR EXPERIENCE

PORT-TO-PORT

FLEXIBILITY - ALL INCLUSIVE

For those who prefer to manage their own airfare and transfers, but still want included shore excursions, this fare is for you

Payment 100%* refundable until 150 days pre cruise

FROM A\$10,800

PER GUEST

PRE CRUISE BENEFITS

- Private Executive Transfers
- International Flights
- Airport transfers

ALL ONBOARD LUXURY INCLUSIONS

- Food and beverages
- Butler service
- Expedition gear

SHORE EXCURSIONS

- Shore excursions

POST CRUISE BENEFITS

- Airport transfers
- International Flights
- Private Executive Transfers

OFFERS FOR THIS CRUISE

All offers are subject to availability.



SUITE UPGRADES

 Expires on May 31, 2024

Enjoy suite upgrade(s) in selected categories, a \$1,000 Shipboard Credit per suite and a refundable 15% reduced deposit when you book by May 31, 2024.



SAIL WITH US REFERRAL OFFER

Venetian Society members may refer up to 10 new-to-Silversea guests in a calendar year for referral savings of A\$650 per suite referred – A\$2,600 of which can be applied per booking. Take advantage of this enhanced opportunity today. Terms and conditions apply.



VENETIAN SOCIETY SAILINGS

Members of the Venetian Society enjoy an additional 5% saving on the cruise fare.

Itinerary & Excursions

 11 PORTS

 4 COUNTRIES

The British Isles and Norway are steeped in history, culture and raw, remote beauty which can not be found elsewhere. Set sail from buzzing city Dublin and head to the remote parts of Scotland. The Orkney Islands and the Shetland Islands are home to rare seabirds and wildlife. Visited by few because it's so far from big cities you'll then drink in the untouched natural splendour of Norway at its finest. Witness pristine fjords and soaring mountains.



Included with **Door-to-Door**



Private Executive Transfers

Included with **Door-to-Door**



International flights - Economy class

Included with **Door-to-Door**



Airport transfers



01 Dublin

IRELAND

WED, JULY 16
DEPARTURE 18:00



02 Lunga

UNITED KINGDOM
3 EXCURSIONS

THU, JULY 17
13:00 - 20:00



03 Shiant Islands, Scotland

UNITED KINGDOM
2 EXCURSIONS

FRI, JULY 18
06:30 - 11:30



03 Loch Ewe

UNITED KINGDOM
1 EXCURSION

FRI, JULY 18
13:30 - 18:00



04 Stromness, Orkney Islands, Scotland

UNITED KINGDOM
3 EXCURSIONS

SAT, JULY 19
07:30 - 18:00



05 Sumburgh, Shetland Islands, Scotland

UNITED KINGDOM

SUN, JULY 20
06:30 - 12:00



05 Fair Isle, Scotland

UNITED KINGDOM

SUN, JULY 20
14:30 - 20:00



06 Bekkjarvik

NORWAY
2 EXCURSIONS

MON, JULY 21
12:30 - 20:00



07 Rosendal

NORWAY

TUE, JULY 22
07:00 - 19:00



08 Cruise Lysefjord

NORWAY

WED, JULY 23
08:00 - 11:00



09 Day at sea

INTERNATIONAL WATERS

THU, JULY 24



10 Copenhagen

DENMARK

FRI, JULY 25
ARRIVAL 07:00

Included with **Door-to-Door**



Airport transfers

Included with **Door-to-Door**



International flights - Economy class

Included with **Door-to-Door**

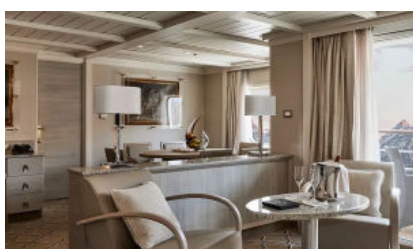


Private Executive Transfers

The excursions are provided as a sample of what may be offered on this voyage and are subject to change. We are constantly updating our shore excursion programme with immersive and authentic experiences, so please do not hesitate to review your tour programme choice closer to your sail date. We invite guests to visit [my.silversea.com](https://www.silversea.com) for the most updated information.

SUITES

Silversea's oceanview suites are some of the most spacious in luxury cruising. All include the services of a butler thanks to the highest service ratio at sea and almost all have a private teak veranda so that you can breathe in the fresh sea air by merely stepping outside your door. Select your suite and Request a Quote - guests who book early are rewarded with the best fares and ability to select their desired suite.



OWNER'S SUITE

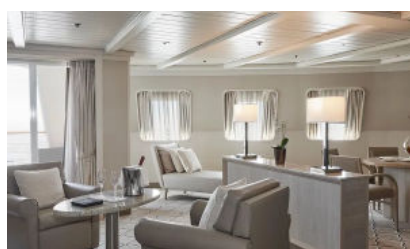
CATEGORY HIGHLIGHTS

- Deck 7 of 8
- Suite size 55 sq.m. including veranda
- Veranda
- Living room

PRICES PER GUESTS START FROM

DOOR-TO-DOOR **A\$54,700**

PORT-TO-PORT **A\$49,700**



GRAND SUITE

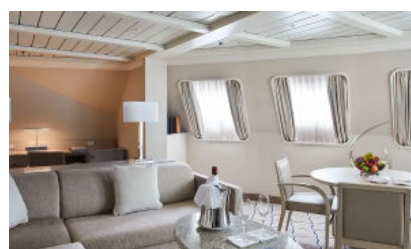
CATEGORY HIGHLIGHTS

- Deck 7 of 8
- Suite size 95 sq.m. including veranda
- Veranda
- Living room

PRICES PER GUESTS START FROM

DOOR-TO-DOOR **A\$42,800**

PORT-TO-PORT **A\$37,800**



ROYAL SUITE

CATEGORY HIGHLIGHTS

- Deck 6 of 8
- Suite size 69 sq.m. including veranda
- Veranda
- Living room

PRICES PER GUESTS START FROM

DOOR-TO-DOOR **A\$37,400**

PORT-TO-PORT **A\$32,400**



SILVER SUITE

CATEGORY HIGHLIGHTS

- Deck 5, 6, 7 of 8
- Suite size 48 sq.m. including veranda
- Veranda
- Living room

PRICES PER GUESTS START FROM

DOOR-TO-DOOR **A\$35,200**

PORT-TO-PORT **A\$30,200**



MEDALLION SUITE

CATEGORY HIGHLIGHTS

- Deck 7, 8 of 8
- Suite size 41 sq.m. including veranda
- Veranda
- Living room

PRICES PER GUESTS START FROM

DOOR-TO-DOOR **A\$27,300**

PORT-TO-PORT **A\$22,300**



DELUXE VERANDA SUITE

 SUITE UPGRADES: ENHANCE YOUR EXPERIENCE

CATEGORY HIGHLIGHTS

- Deck 5, 6, 7 of 8
- Suite size 27 sq.m. including veranda
- Veranda

PRICES PER GUESTS START FROM

DOOR-TO-DOOR ~~A\$20,600~~ **A\$18,000**

PORT-TO-PORT ~~A\$16,600~~ **A\$13,000**



CLASSIC VERANDA SUITE

 SUITE UPGRADES: ENHANCE YOUR EXPERIENCE

CATEGORY HIGHLIGHTS

- Deck 5, 6, 7 of 8
- Suite size 27 sq.m. including veranda
- Veranda

PRICES PER GUESTS START FROM

DOOR-TO-DOOR ~~A\$18,000~~ **A\$15,800**

PORT-TO-PORT ~~A\$13,000~~ **A\$10,800**



VISTA SUITE

CATEGORY HIGHLIGHTS

- Deck 4, 7 of 8
- Suite size 22 sq.m.

PRICES PER GUESTS START FROM

DOOR-TO-DOOR **A\$15,800**

PORT-TO-PORT **A\$10,800**

All inclusive onboard benefits

Enjoy the 24-hour gourmet dining, butler service, superb entertainment and premium beverages that Silversea is known for.

 **STAFF & SERVICES**

View more about this cruise:

<https://www.silversea.com/destinations/northern-europe-british-isles-cruise/dublin-to-copenhagen-wi250716009.html>

To view all terms and conditions please visit: <https://www.silversea.com/terms-and-conditions>

- Butler services in every suite
- Nearly one crew member for every guest
- 24-hour dining service
- Complimentary transportation into town in most ports



LEISURE ONBOARD

- Choice of restaurants, diverse cuisine, open-seating dining
- Beverages in-suite and throughout the ship, including champagne, select wines and spirits
- Onboard entertainment
- Spa and Fitness Center



UTILITIES & AMENITIES

- Unlimited free WiFi
- Onboard gratuities

Ship - Silver Wind

A major upgrade in December 2018 saw Silver Wind looking better than ever. A second refurbishment in November 2021 saw her benefitting from a strengthened ice-class hull and made her one of the most adaptable ships in our fleet. Still timelessly elegant, still luxuriously relaxed, Silver Wind's improved cruising versatility means she can whizz from Polar Regions to iconic ports with fluid ease. Whether you want to get up close and personal to penguins in Antarctica or laze on the golden sands of the Caribbean, get ready for a wealth of diverse destination experiences aboard Silver Wind.

Ship Details: <https://www.silversea.com/ships/silver-wind.html>

